

MICRO SWITCH

A DIVISION OF MINNEAPOLIS-HONEYWELL REGULATOR COMPANY
MINNEAPOLIS, MINN. H

FED. MFR. CODE 91929

SWITCH - BASIC

CATALOG LISTING

BZ-2RW82-A2

APA1000

M BZ-2RW82-A2

PAGE 1 OF 1

DRAWING NUMBER

ISSUE

10

REPLACES

RELEASE NO.

CHECK

23 AUG 05

RJ

CHECK

11 APR 02

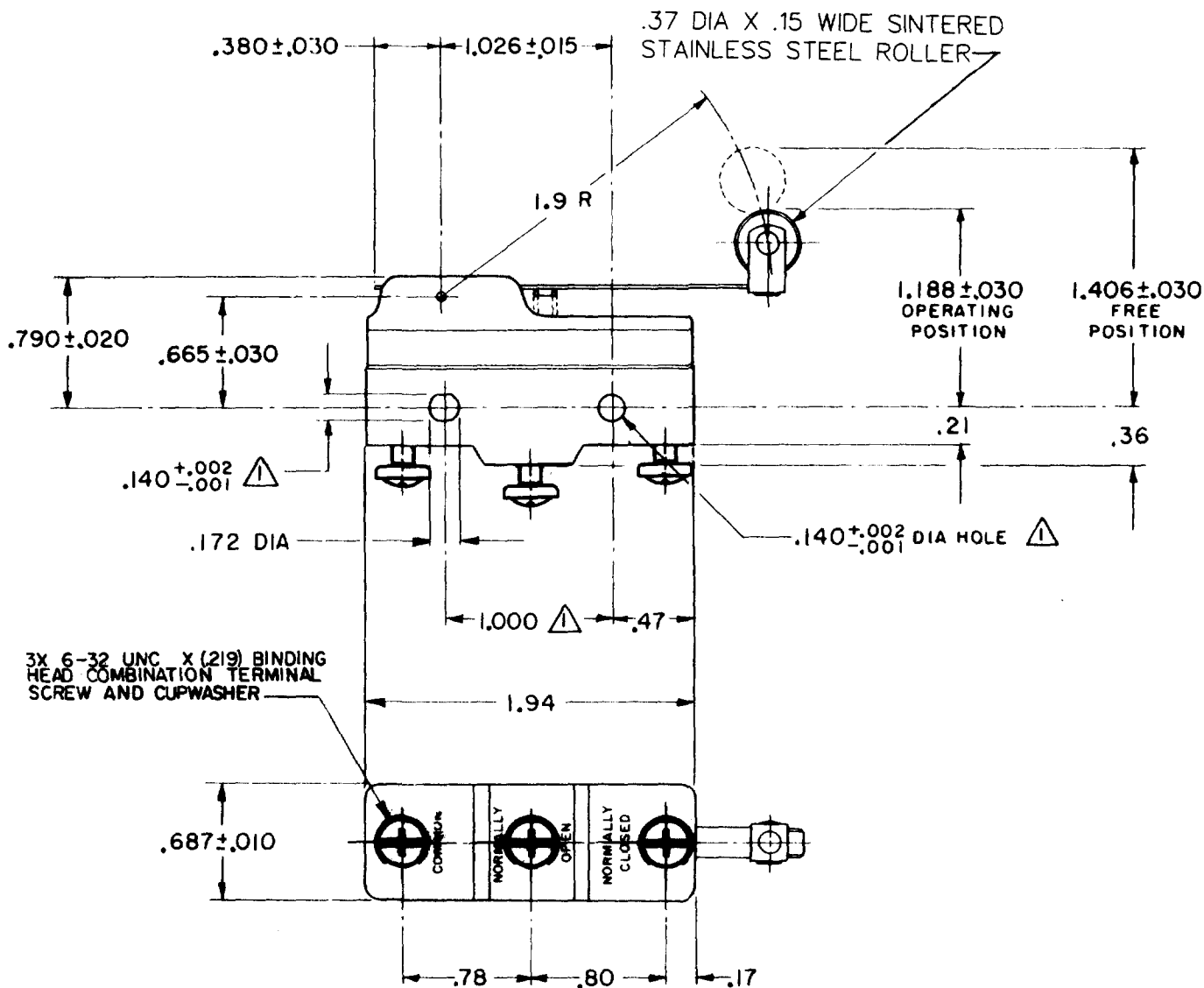
CHECK

27 MAR 62

GCH

REVISIONS

A	CO 16736	GCH 27 MAR 62
B	CO34306	DJW 17 JUL 75
C	CO- 73287-B	DHD 19 MAY 93
D	CO- 75204B	KDR 1 FEB 94
E	CO- 77589	MAM 29 MAR 94
F	CO93346	DLT 11 SEP 98
G	0015139	TSG 23 AUG 05



NOTE
 ▲ MOUNTING HOLES WILL ACCEPT PINS OR SCREWS OF .139 MAX DIA ON 1.000±.002 CENTERS

THIS DRAWING COVERS A PROPRIETARY ITEM AND IS THE PROPERTY OF MICRO SWITCH, A DIVISION OF MINNEAPOLIS-HONEYWELL REGULATOR CO. THIS DRAWING IS NOT TO BE COPIED OR USED WITHOUT THE APPROVAL OF MICRO SWITCH.

CHARACTERISTICS

OPERATING FORCE ----- 3 1/2 OZ MAX
 RELEASE FORCE ----- 3/4 OZ MIN
 DIFFERENTIAL TRAVEL ----- .004 - .040
 OVERTRAVEL ----- .156 MIN

ELECTRICAL DATA

CONTACT ARRANGEMENT
 S P D T

-L96- 16A-125, 250, OR 480 VAC
 1/2 A-125 VDC; 1/4 A-250 VDC
 1/8 HP-125 VAC; 1/4 HP-250 VAC

-L288-
 -L306-
 -L315-
 CE EN 05 EC
 16A 250V T85 5E4

SCALE FULL

DO NOT SCALE PRINT

UNLESS OTHERWISE SPECIFIED

DIMENSIONS ARE IN INCHES
TOLERANCES ARE:
 ONE PLACE (.0) ±.030
 TWO PLACE (.00) ±.015
 THREE PLACE (.000) ±.005
 ANGLES ±

WEIGHT .076 LB

FORMTEK

FO-90378

DRAWN